

TABLO DÜZENLEME

Mevcut Bir Tabloya Bir Kolon Ekleme

ALTER TABLE komutu içinde **ADD** sözcüğü kullanılarak, mevcut tabloya bir satır eklenebilir.

Nesneleri güncellemek için kullanılır.

Mevcut bir tabloya, yeni bir kolon eklenirken, o kolon içindeki verinin türü, uzunluğu ve bu kolondaki verinin boş bırakılıp bırakılmayacağı (NULL veya NOT NULL) özellikleri de belirtilir.

DESKTOP-7VLULDE.kitap - dbo.kitap - Microsoft SQL Server Management Studio

File Edit View Project Query Designer Tools Window Help

Execute

Object Explorer

Connect

. (SQL Server 15.0.2080.9 - DESKTOP-7V

Databases

- System Databases
- Database Snapshots
- lesson1
- personel
- kitap
 - Database Diagrams
 - Tables
 - System Tables
 - FileTables
 - External Tables
 - Graph Tables
 - dbo.kitap
 - Views
 - External Resources
 - Synonyms
 - Programmability
 - Service Broker
 - Storage
 - Security
- Security
- Server Objects
- Replication
- PolyBase
- Always On High Availability
- Management
- Integration Services Catalogs
- SQL Server Agent (Agent XPs disabl
- XEvent Profiler

KitapID	KitapAdi	Yazar	YayinEvi	Fiyat
NULL	NULL	NULL	NULL	NULL

DESKTOP-7VLULDE.kitap - dbo.kitap

DESKTOP-7VLULDE.ki...kitap - dbo.kitap

Daha önceden oluşturmuş olduğumuz **kitap** veri tabanını üzerinden uygulamamızı gerçekleştireceğiz.

of 1

Object Explorer

- Connect
- SQL Server 15.0.2080.9 - DESKTOP-7V
 - Databases
 - System Databases
 - Database Snapshots
 - lesson1
 - personel
 - kitap
 - Database Diagrams
 - Tables
 - System Tables
 - FileTables
 - External Tables
 - Graph Tables
 - dbo.kitap
 - Views
 - External Resources
 - Synonyms
 - Programmable Objects
 - Service Broker
 - Storage
 - Security
 - Server Objects
 - Replication
 - PolyBase
 - Always On High Availability
 - Management
 - Integration Services
 - SQL Server Agent (A)
 - XEvent Profiler

KitapID	KitapAdi	Yazar	YayinEvi	Fiyat
NULL	NULL	NULL	NULL	NULL

- New Table...
- Design
- Select Top 1000 Rows
- Edit Top 200 Rows
- Script Table as
- View Dependencies
- Memory Optimization Advisor
- Encrypt Columns...
- Full-Text index
- Storage
- Stretch
- Policies
- Facets
- Start PowerShell
- Reports
- Rename
- Delete
- Refresh
- Properties

Object Explorer

- Connect
- SQL Server 15.0.2080.9 - DESKTOP-7V
 - Databases
 - System Databases
 - Database Snapshots
 - lesson1
 - personel
 - kitap
 - Database Diagrams
 - Tables
 - System Tables
 - FileTables
 - External Tables
 - Graph Tables
 - dbo.kitap
 - Views
 - External Resources
 - Synonyms
 - Programmability
 - Service Broker
 - Storage
 - Security
 - Security
 - Server Objects
 - Replication
 - PolyBase
 - Always On High Availability
 - Management
 - Integration Services Catalogs
 - SQL Server Agent (Agent XPs disabled)
 - XEvent Profiler

Column Name	Data Type	Allow Nulls
KitapID	int	<input checked="" type="checkbox"/>
KitapAdi	nvarchar(50)	<input checked="" type="checkbox"/>
Yazar	nvarchar(50)	<input checked="" type="checkbox"/>
YayinEvi	nvarchar(30)	<input checked="" type="checkbox"/>
Fiyat	smallmoney	<input checked="" type="checkbox"/>
Sayfa	smallint	<input type="checkbox"/>

Sayfa isimli bir kolon daha ekledikten sonra kaydetme işlemini gerçekleştiriyoruz.

Column Properties

(General)

(Name)	Sayfa
Allow Nulls	Yes
Data Type	smallint
Default Value or Binding	

Table Designer

(General)

KOMUTLAR İLE TABLO DÜZENLEME



Object Explorer

- Connect
- . (SQL Server 15.0.2080.9 - DESKTOP-7V)
- Databases
 - System Databases
 - Database Snapshots
 - lesson1
 - personel
 - kitab
 - Database Diagrams
 - Tables
 - System Tables
 - FileTables
 - External Tables
 - Graph Tables
 - dbo.kitap
 - Views
 - External Resources
 - Synonyms
 - Programmability
 - Service Broker
 - Storage
 - Security
 - Security
 - Server Objects
 - Replication
 - PolyBase
 - Always On High Availability
 - Management
 - Integration Services Catalogs
 - SQL Server Agent (Agent XPs disabled)
 - XEvent Profiler

Object Explorer

- Connect
- (SQL Server 15.0.2080.9 - DESKTOP-7V)
- Databases
 - System Databases
 - Database Snapshots
 - lesson1
 - personel
 - kitab
 - Database Diagrams
 - Tables
 - Views
 - External Resources
 - Synonyms
 - Programmability
 - Service Broker
 - Storage
 - Security
 - Security
 - Server Objects
 - Replication
 - PolyBase
 - Always On High Availability
 - Management
 - Integration Services Catalogs
 - SQL Server Agent (Agent XPs disabled)
 - XEvent Profiler

SQLQuery2.sql - (L...E\Patnos MYO (58))*

```
use kitap
```

Messages

Commands completed successfully.

Completion time: 2021-11-02T13:29:55.4829673+03:00

Query executed successfully.

(local) (15.0 RTM) | DESKTOP-7VLULDE\Patnos... | kitab | 00:00:00 | 0 rows

Object Explorer

- Connect
- SQL Server 15.0.2080.9 - DESKTOP-7V
- Databases
 - System Databases
 - Database Snapshots
 - lesson1
 - personel
 - kitap
 - Database Diagrams
 - Tables
 - System Tables
 - FileTables
 - External Tables
 - Graph Tables
 - dbo.kitap
 - Columns
 - Keys
 - Constraints
 - Triggers
 - Indexes
 - Statistics
 - Views
 - External Resources
 - Synonyms
 - Programmability
 - Service Broker
 - Storage
 - Security
- Security
- Server Objects
- Replication
- PolyBase
- Always On High Availability
- Management
- Integration Services Catalogs
- SQL Server Agent (Agent XPs disabled)
- XEvent Profiler

```
-- Alter: Kitap tablosuna yeni sütun eklemek için kullanıldı.  
alter table kitap add SayfaSayisi smallint
```

259 %

Messages

259 %

Query completed with errors.

(local) (15.0 RTM) | DESKTOP-7VLULDE\Patnos... | kitap | 00:00:00 | 0 rows

Tablolardaki

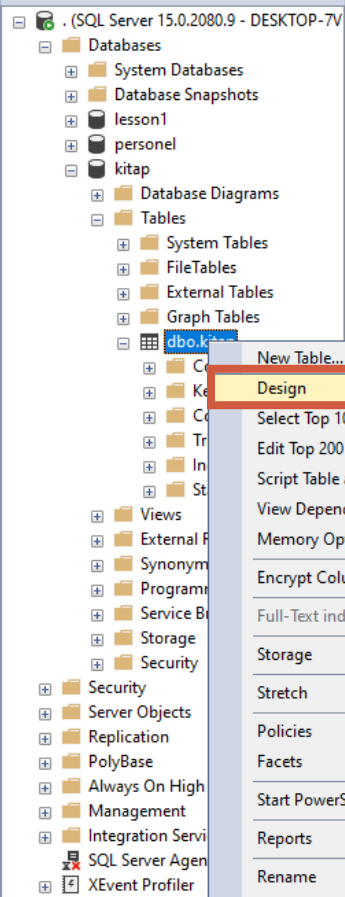
Sütunları Güncelleme



Object Explorer

DESKTOP-7VLULDE.kitap - dbo.kitap SQLQuery2.sql - (...E\Patnos MYO (58))

Connect



- New Table...
- Design
- Select Top 1000 Rows
- Edit Top 200 Rows
- Script Table as
- View Dependencies
- Memory Optimization Advisor
- Encrypt Columns...
- Full-Text index
- Storage
- Stretch
- Policies
- Facets
- Start PowerShell
- Reports
- Rename
- Delete
- Refresh
- Properties

```
-- Alter: Kitap tablosuna yeni sütun eklemek için kullanıldı.
```

```
alter table kitap add SayfaSayisi smallint
```

259 %

Messages

259 %

Query completed with errors.

(local) (15.0 RTM) | DESKTOP-7VLULDE\Patnos... | kitap | 00:00:00 | 0 rows

DESKTOP-7VLULDE.kitap - dbo.kitap - Microsoft SQL Server Management Studio

File Edit View Project Table Designer Tools Window Help

kitap Execute

Object Explorer

Connect

. (SQL Server 15.0.2080.9 - DESKTOP-7V

Databases

System Databases

Database Snapshots

lesson1

personel

kitab

Database Diagrams

Tables

System Tables

FileTables

External Tables

Graph Tables

dbo.kitap

Columns

Keys

Constraints

Triggers

Indexes

Statistics

Views

External Resources

Synonyms

Programmability

Service Broker

Storage

Security

Security

Server Objects

Replication

PolyBase

Always On High Availability

Management

Integration Services Catalogs

SQL Server Agent (Agent XPs disabl

XEvent Profiler

DESKTOP-7VLULDE.kitap - dbo.kitap

DESKTOP-7VLULDE.kitap - dbo.kitap

SQLQuery2.sql - (...E\Patnos MYO (58))*

Column Name	Data Type	Allow Nulls
KitapID	int	<input checked="" type="checkbox"/>
KitapAdi	nvarchar(50)	<input checked="" type="checkbox"/>
Yazar	nvarchar(50)	<input checked="" type="checkbox"/>
YayinEvi	nvarchar(30)	<input checked="" type="checkbox"/>
Fiyat	smallmoney	<input checked="" type="checkbox"/>
Sayfa	smallint	<input checked="" type="checkbox"/>
SayfaSayisi	smallint	<input checked="" type="checkbox"/>

Fiyat sütununun türünü Money olarak değiştirelim.

Column Properties

(General)

(Name) Fiyat

Allow Nulls Yes

Data Type smallmoney

Default Value or Binding

Table Designer

(General)

Object Explorer

- Connect
- SQL Server 15.0.2080.9 - DESKTOP-7VLULDE.kitap
 - Databases
 - System Databases
 - Database Snapshots
 - lesson1
 - personel
 - kitap
 - Database Diagrams
 - Tables
 - System Tables
 - FileTables
 - External Tables
 - Graph Tables
 - dbo.kitap
 - Columns
 - Keys
 - Constraints
 - Triggers
 - Indexes
 - Statistics
 - Views
 - External Resources
 - Synonyms
 - Programmability
 - Service Broker
 - Storage
 - Security
 - Server Objects
 - Replication
 - PolyBase
 - Always On High Availability
 - Management
 - Integration Services Catalogs
 - SQL Server Agent (Agent XPs disabled)
 - XEvent Profiler

Column Name	Data Type	Allow Nulls
KitapID	int	<input checked="" type="checkbox"/>
KitapAdi	nvarchar(50)	<input checked="" type="checkbox"/>
Yazar	nvarchar(50)	<input checked="" type="checkbox"/>
YayinEvi	nvarchar(30)	<input checked="" type="checkbox"/>
Fiyat	money	<input checked="" type="checkbox"/>
Sayfa	smallint	<input checked="" type="checkbox"/>
SayfaSayisi	smallint	<input checked="" type="checkbox"/>

Daha sonra kaydetme işlemini gerçekleştiririm.

Column Properties

(General)

(Name)	Fiyat
Allow Nulls	Yes
Data Type	smallmoney
Default Value or Binding	

Table Designer

(General)

DESKTOP-7VLULDE.kitap - dbo.kitap* - Microsoft SQL Server Management Studio

File Edit View Project Table Designer Tools Window Help

kitap Execute

Object Explorer

Connect

. (SQL Server 15.0.2080.9 - DESKTOP-7V

Databases

System Databases

Database Snapshots

lesson1

personel

kitab

Database Diagrams

Tables

System Tables

FileTables

External Tables

Graph Tables

dbo.kitap

Columns

Keys

Constraints

Triggers

Indexes

Statistics

Views

External Resources

Synonyms

Programmability

Service Broker

Storage

Security

Security

Server Objects

Replication

PolyBase

Always On High Availability

Management

Integration Services Catalogs

SQL Server Agent (Agent XPs disabl

XEvent Profiler

Column Name	Data Type	Allow Nulls
KitapID	int	<input checked="" type="checkbox"/>
KitapAdi	nvarchar(50)	<input checked="" type="checkbox"/>
Yazar	nvarchar(50)	<input checked="" type="checkbox"/>
YayinEvi	nvarchar(30)	<input checked="" type="checkbox"/>
Fiyat	money	<input checked="" type="checkbox"/>
Sayfa	smallint	<input checked="" type="checkbox"/>
SayfaSayisi	smallint	<input checked="" type="checkbox"/>

Save

Saving changes is not permitted. The changes you have made require the following tables to be dropped and re-created. You have either made changes to a table that can't be re-created or enabled the option Prevent saving changes that require the table to be re-created.

kitab

Cancel Save Text File

Column Properties

(General)

(Name) Fiyat

Allow Nulls Yes

Data Type money

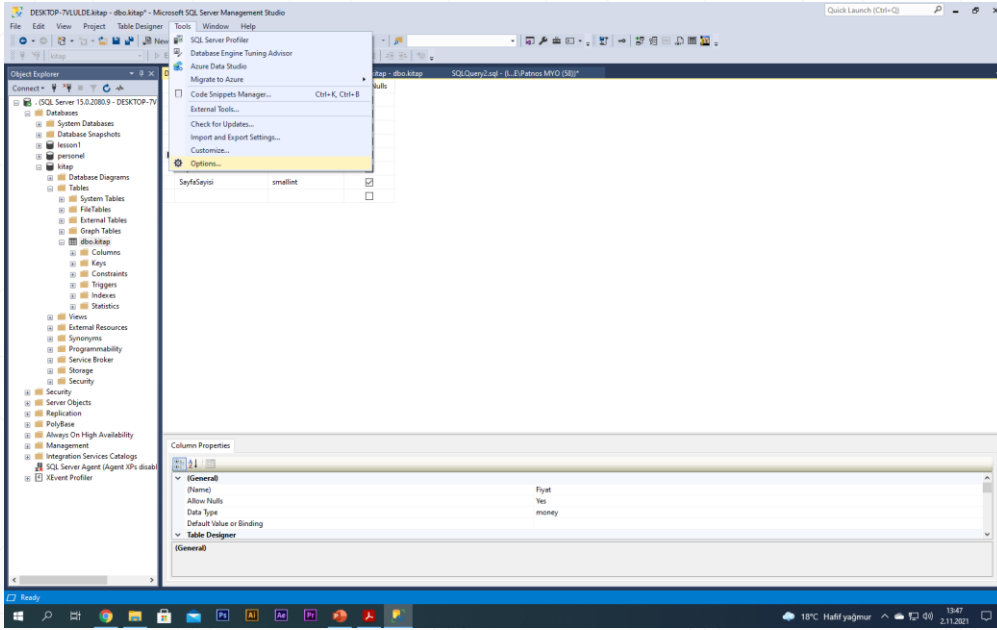
Default Value or Binding

Table Designer

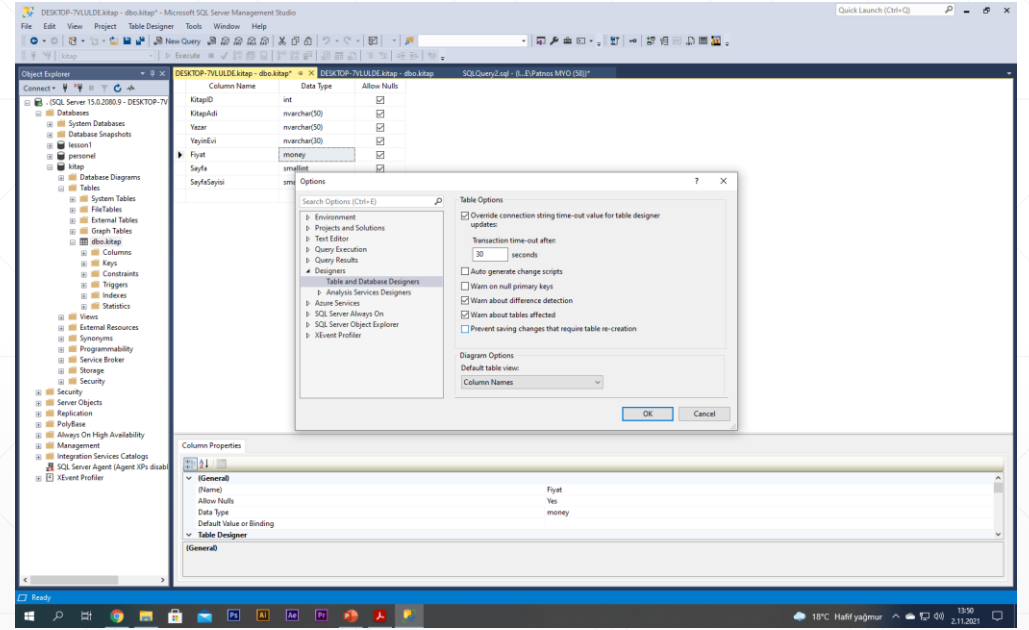
(General)

Güvenlik amacıyla yaptığınız değişiklikler kabul edilmeyecektir. Bunun için SQL'in varsayılan ayarlarını değiştirmemiz gerekmektedir. Açılan pencerede **Cancel** butonuna basalım.

Tools > Options > Designers > Table and Database Designers > Prevent saving changes that require table re-creation > İşaretili alanı kaldırdıktan sonra veri tabanında istediğimiz değişikliğe izin verecektir.



Resim 1



Resim 2

Object Explorer

- Connect
- SQL Server 15.0.2080.9 - DESKTOP-7V
- Databases
 - System Databases
 - Database Snapshots
 - lesson1
 - personal
 - kitap
 - Database Diagrams
 - Tables
 - System Tables
 - FileTables
 - External Tables
 - Graph Tables
 - dbo.kitap
 - Columns
 - Keys
 - Constraints
 - Triggers
 - Indexes
 - Statistics
 - Views
 - External Resources
 - Synonyms
 - Programmability
 - Service Broker
 - Storage
 - Security
- Security
- Server Objects
- Replication
- PolyBase
- Always On High Availability
- Management
- Integration Services Catalogs
- SQL Server Agent (Agent XPs disabled)
- XEvent Profiler

```
-- Alter: Kitap tablosuna yeni sütun eklemek için kullanıldı.  
alter table kitap add SayfaSayisi smallint  
  
-- Sütunun veri tipini değiştirmek için kullanılan komut  
alter table kitap alter column SayfaSayisi int
```

Messages

```
Commands completed successfully.  
  
Completion time: 2021-11-02T13:52:21.6055346+03:00
```

Query executed successfully.

Bu işlemi yaptıktan sonra SayfaSayisi sütunu smallint tipinden int tipine dönüşmüş oldu.

Object Explorer

- Connect
- SQL Server 15.0.2080.9 - DESKTOP-7V
 - Databases
 - System Databases
 - Database Snapshots
 - lesson1
 - personel
 - kitab
 - Database Diagrams
 - Tables
 - System Tables
 - FileTables
 - External Tables
 - Graph Tables
 - dbo.kitap
 - Columns
 - Keys
 - Constraints
 - Triggers
 - Indexes
 - Statistics
 - Views
 - External Resources
 - Synonyms
 - Programmability
 - Service Broker
 - Storage
 - Security
 - Server Objects
 - Replication
 - PolyBase
 - Always On High Availability
 - Management
 - Integration Services Catalogs
 - SQL Server Agent (Agent XPs disabled)
 - XEvent Profiler

Column Name	Data Type	Allow Nulls
KitapID	int	<input checked="" type="checkbox"/>
KitapAdi	nvarchar(50)	<input checked="" type="checkbox"/>
Yazar	nvarchar(50)	<input checked="" type="checkbox"/>
YayinEvi	nvarchar(30)	<input checked="" type="checkbox"/>
Fiyat	money	<input checked="" type="checkbox"/>
Sayfa	smallint	<input checked="" type="checkbox"/>
SayfaSayisi	int	<input checked="" type="checkbox"/>

Column Properties

SayfaSayisi

(Name)	SayfaSayisi
Allow Nulls	Yes
Data Type	int
Default Value or Binding	

Table Designer

(General)



Object Explorer

- Connect
- (SQL Server 15.0.2080.9 - DESKTOP-7V)
- Databases
 - System Databases
 - Database Snapshots
 - lesson1
 - personel
 - Database Diagrams
 - Tables
 - System Tables
 - FileTables
 - External Tables
 - Graph Tables
 - Views
 - External Resources
 - Synonyms
 - Programmability
 - Service Broker
 - Storage
 - Security
 - kitap
 - Security
 - Server Objects
 - Replication
 - PolyBase
 - Always On High Availability
 - Management
 - Integration Services Catalogs
 - SQL Server Agent (Agent XPs disabled)
 - XEvent Profiler

```
use personel
```

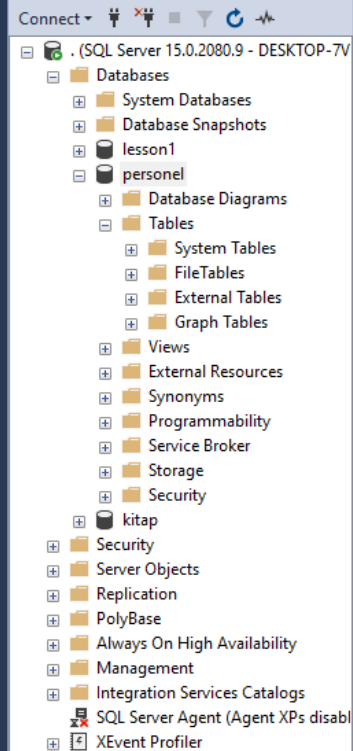
259 % Messages

```
Commands completed successfully.  
  
Completion time: 2021-11-02T13:55:44.0414300+03:00
```

259 % Query executed successfully. | (local) (15.0 RTM) | DESKTOP-7VLULDE\Patnos... | personel | 00:00:00 | 0 rows



Object Explorer



```
-- Personel veritabanına PersonelBilgi isimli tablo oluşturma
create table PersonelBilgi(
  sicilNo int NOT NULL,
  PersonelAdi nvarchar(50) NOT NULL,
  PersonelSoyadi nvarchar(50) NOT NULL,
)
```

Messages

Commands completed successfully.

Completion time: 2021-11-02T13:58:00.0611914+03:00

Query executed successfully.

Object Explorer

- Connect
- SQL Server 15.0.2080.9 - DESKTOP-7V
- Databases
 - System Databases
 - Database Snapshots
 - lesson1
 - personel
 - Database Diagrams
 - Tables
 - System Tables
 - FileTables
 - External Tables
 - Graph Tables
 - dbo.PersonelBilgi
 - Views
 - External Resources
 - Synonyms
 - Programmability
 - Service Broker
 - Storage
 - Security
 - kitap
 - Security
 - Server Objects
 - Replication
 - PolyBase
 - Always On High Availability
 - Management
 - Integration Services Catalogs
 - SQL Server Agent (Agent XPs disabled)
 - XEvent Profiler

Column Name	Data Type	Allow Nulls
sicilNo	int	<input type="checkbox"/>
PersonelAdi	nvarchar(50)	<input type="checkbox"/>
PersonelSoyadi	nvarchar(50)	<input type="checkbox"/>

Column Properties

(General)

(Name)	sicilNo
Allow Nulls	No
Data Type	int
Default Value or Binding	

Table Designer

(General)

Object Explorer

- Connect
- (SQL Server 15.0.2080.9 - DESKTOP-7V)
- Databases
 - System Databases
 - Database Snapshots
 - lesson1
 - personel
 - Database Diagrams
 - Tables
 - System Tables
 - FileTables
 - External Tables
 - Graph Tables
 - dbo.PersonelBilgi
 - Views
 - External Resources
 - Synonyms
 - Programmability
 - Service Broker
 - Storage
 - Security
 - kitap
 - Security
 - Server Objects
 - Replication
 - PolyBase
 - Always On High Availability
 - Management
 - Integration Services Catalogs
 - SQL Server Agent (Agent XPs disabled)
 - XEvent Profiler

```
-- Personel veritabanına PersonelBilgi isimli tablo oluşturma
create table PersonelBilgi(
  sicilNo int NOT NULL,
  PersonelAdi nvarchar(50) NOT NULL,
  PersonelSoyadi nvarchar(50) NOT NULL,
)

-- Personel tablosuna, işe başlama tarihini belirten yeni bir kolon ekleme
ALTER TABLE personelBilgi
ADD iseBaslamaTarihi DATE
```

Messages

Commands completed successfully.

Completion time: 2021-11-02T14:01:19.6833224+03:00

214 %

214 %

Query executed successfully.

Object Explorer

- Connect
- SQL Server 15.0.2080.9 - DESKTOP-7V
- Databases
 - System Databases
 - Database Snapshots
 - lesson1
 - personel
 - Database Diagrams
 - Tables
 - System Tables
 - FileTables
 - External Tables
 - Graph Tables
 - dbo.PersonelBilgi
 - Views
 - External Resources
 - Synonyms
 - Programmability
 - Service Broker
 - Storage
 - Security
 - kitap
 - Security
 - Server Objects
 - Replication
 - PolyBase
 - Always On High Availability
 - Management
 - Integration Services Catalog
 - SQL Server Agent (Agent)
 - XEvent Profiler

```
-- Personel veritabanına PersonelBilgi isimli tablo oluşturma
create table PersonelBilgi(
    sicilNo int NOT NULL,
    PersonelAdi nvarchar(50) NOT NULL,
    PersonelSoyadi nvarchar(50) NOT NULL,
)

-- Personel tablosuna, işe başlama tarihini belirten yeni bir kolon ekleme
ALTER TABLE personelBilgi
ADD PersonelBaslamaTarihi DATE
```

Query completed successfully.

Run time: 2021-11-02T14:01:19.6833224+03:00

214 %

Query executed successfully.

(local) (15.0 RTM) | DESKTOP-7VLULDE\Patnos... | personel | 00:00:00 | 0 rows

Object Explorer

- Connect
- SQL Server 15.0.2080.9 - DESKTOP-7V
 - Databases
 - System Databases
 - Database Snapshots
 - lesson1
 - personel
 - Database Diagrams
 - Tables
 - System Tables
 - FileTables
 - External Tables
 - Graph Tables
 - dbo.PersonelBilgi
 - Views
 - External Resources
 - Synonyms
 - Programmability
 - Service Broker
 - Storage
 - Security
 - kitap
 - Security
 - Server Objects
 - Replication
 - PolyBase
 - Always On High Availability
 - Management
 - Integration Services Catalogs
 - SQL Server Agent (Agent XPs disabled)
 - XEvent Profiler

Column Name	Data Type	Allow Nulls
sicilNo	int	<input type="checkbox"/>
PersonelAdi	nvarchar(50)	<input type="checkbox"/>
PersonelSoyadi	nvarchar(50)	<input type="checkbox"/>
iseBaslamaTarihi	date	<input checked="" type="checkbox"/>

Column Properties

(General)

(Name)	sicilNo
Allow Nulls	No
Data Type	int
Default Value or Binding	

Table Designer

(General)